

SYNERGY • 20
13

SYNERGY • $\frac{20}{13}$

DataFlex Web Application Symposium – Part 5
Web Application Debugging

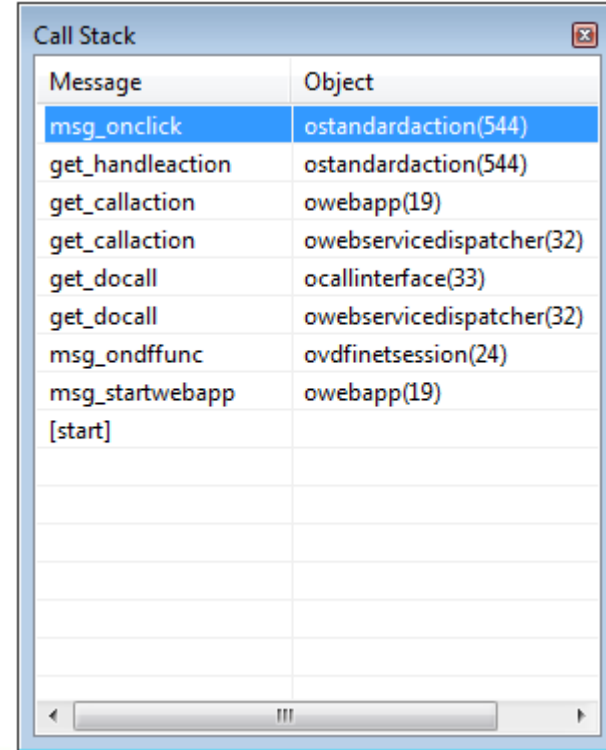
Harm Wibier
Development Team
www.dataaccess.com

Specifics of debugging DataFlex code in web applications...

DEBUGGING

Debugging

- Separate web-service calls
 - Handling a request
 - Structs with data come in
 - Structs with data go out
- Lots of framework activity



Message	Object
msg_onclick	ostandardaction(544)
get_handleaction	ostandardaction(544)
get_callaction	owebapp(19)
get_callaction	oweb servicedispatcher(32)
get_docal	ocallinterface(33)
get_docal	oweb servicedispatcher(32)
msg_ondffunc	ovdfinetsession(24)
msg_startwebapp	owebapp(19)
[start]	

Asynchronous

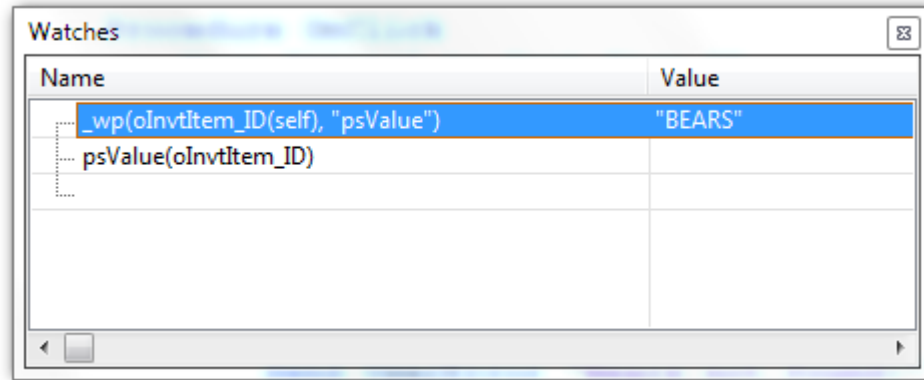
- Browser waits until processing finished before updating
 - Changing properties (WebSet)
 - **WebSet** pbEnabled **of** oCustomerName
 - Executing client actions
 - **Send** Show **of** oCustomerView
 - **Send** ShowInfoBox "Hello Synergy"
 - **Send** ClientLog "Hello Synergy"

Framework Operations

- Process is attached (OnAttachProcess)
- Web Properties are loaded (OnSyncWebApp)
- Views are synchronized (OnSyncView)
 - DDO's are refound
 - Rebuild_Constraints
- Actions are proccessed (On..)
- Response is build
- Process is dettached (OnDetachProcess)

Web Properties

- Use `_wp(object, "propname")`



- Only use in the debugger!

Things that go wrong easily...

COMMON ISSUES

WebGet & WebSet

- Forgot to use WebSet / WebGet
 - No error, just the initial value
- Use WebGet on a view outside scope
 - Causes an error
- Use WebSet during initialization
 - Causes an error
 - Use AppSynching to check

Modal Processing

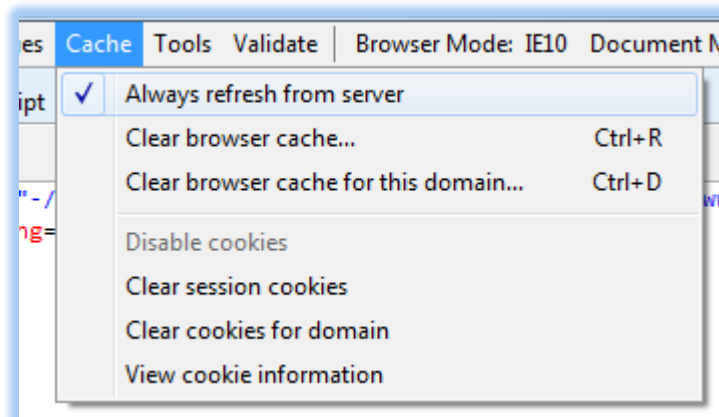
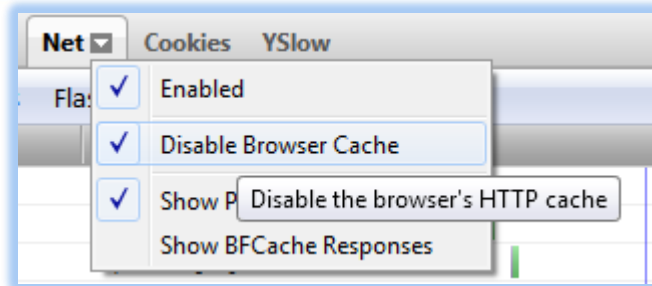
- Showing a dialog takes multiple calls
- DDO's not synchronized before OnShow
 - Temporary store search value in web property

Debug vs. Life

- Persistence
 - Process pooling!
 - Multiple clients!
- Different user (system account)
 - Regional settings (date format)
 - Access rights
 - File system
 - Database

Browser Caching

- CSS Changes
 - Not shown
 - Chrome cache is tough
- Version error



Unhandled Program Error on the client



The server application ('17.1.12.52') is running a newer version than the client-engine ('17.1.12.51'). This might be a caching issue, consider clearing your browser cache.

Which browsers do we support?

BROWSER SUPPORT

MEANWHILE IN THE DATA ACCESS HEADQUARTERS



Difficulties

- So many browsers!
- Automatic updates
 - FireFox & Chrome
 - Can break things overnight!
- Constant battle
 - Cool latest technologies
 - Supporting older browsers

Techniques

- Fall back
 - Detect browser / api's
 - Switch to older technique
- Framework compatibility layer
- More releases
 - Update installer?

Rendering differences



Terms: COD

- None established
- COD**
- Net 30
- Net 60
- Net 90
- Pre-payment required



State: None established

Terms: **COD**

- Net 30
- Net 60
- Net 90
- Pre-payment required

Unix in the Classroom (30 user)



Terms: COD

- None established
- COD**
- Net 30
- Net 60
- Net 90
- Pre-payment required



Terms: COD

- None established
- COD**
- Net 30
- Net 60
- Net 90
- Pre-payment required

Supported browsers

- Internet Explorer 8 and higher
 - Rendering in 8 not optimal (CSS3)
- Mozilla FireFox
- Google Chrome
- Safari
- Opera



Thank you for your time and attention!

THE END...